

REVIEW OF INTEGRATED PSM RESOURCES AND TOOLS AND INTRODUCTION TO GROUP WORK

Upjeet Chandan

ICCM FTT

17th February 2016

BACKGROUND

- **PSM as a key component of the Global Fund-UNICEF MoU (April 2014)**
- **Integrated programming requires strong integrated supply chains**
- **Global Fund-UNICEF-UNFPA Joint Communique on integrated PSM planning – emphasized importance of working with and through national PSM plans/strategies/systems (December 2014)**
- **March 2015 PSM Meeting in New York and joint PSM missions (Uganda, Zambia, Nigeria)**
- **Significant proportion of GF investments in TB, HIV, and malaria are in health products – strengthening and optimizing the PSM system is critical for achieving programme outcomes**
- **iCCM FTT and UNICEF (PD&SD) in collaboration with the Global Fund worked together to develop PSM tools and guidance to support operationalization of MoU**

THE ICCM PSM PACKAGE INCLUDES:

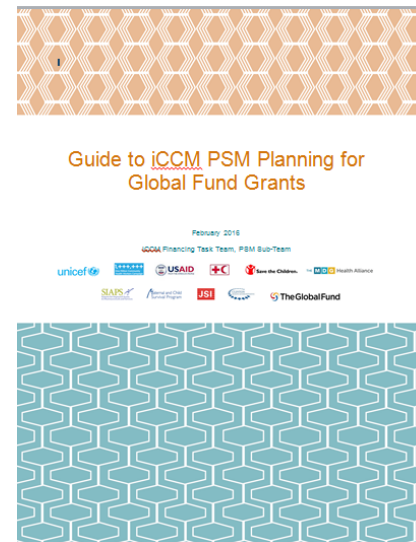
- ✓ **iCCM PSM Checklist**
 - ✓ **Guide to iCCM PSM Planning for Global Fund grants**
 - ✓ **iCCM Product Selection Guide**
- 

ICCM PSM CHECKLIST

- Includes an overview of helpful considerations for country teams as they prepare GF concept notes and supply plans and also during the grant making phase (e.g. activities to strengthen the supply chain)
- Helps promote integrated supply chain planning and management
- Helps identify areas that require attention
- Organized by strategic area/domain:
 - Coordination, management, and integration
 - Resource mobilization
 - Selection
 - Quantification (forecasting and supply planning)
 - Procurement
 - Storage/inventory/management/distribution
 - LMIS
 - Rational Use
 - Financing
 - Regulatory capacity
 - HR Capacity
 - Systems Strengthening & TA

GUIDE TO ICCM PLANNING FOR GLOBAL FUND GRANTS

- Proposes strategies to address PSM related challenges that may arise when implementing iCCM programs that are co-funded by the Global Fund and other donors.
- Provide tips to be considered during the concept note phase so that the submitted budget allows for activities to strengthening the supply chain to support iCCM implementation and ensure a continuous supply of essential medicines is available at the community level.
- Can also be used during the grant making phase to help inform/finalize implementation plans
- Includes topics such as donor coordination and grant accountability; coordination of funds and medicine arrival & delivery; product selection; forecasting; supply planning, procurement, distribution and re-supply etc.



ICCM PRODUCT SELECTION GUIDE



MEDICINES AND DIAGNOSTICS FOR COMMUNITY CASE MANAGEMENT: OPTIONS FOR SELECTION

- ✓ Provides background information, product specifications and indicative pricing information for products for iCCM specified in the UNICEF Global Fund Memorandum of Understanding that are available through UNICEF.
- ✓ Also includes references for additional information on iCCM.

1. INTRODUCTION

The selection of medicines and diagnostics for use in Integrated Community Case Management (iCCM) programmes must take into consideration the needs of the target population (children), the interaction between the caregiver and the community health worker, and the supply chain that will support interventions. Through the WHO/UNICEF Better Medicines for Children project, the UN Commission on Life Saving Commodities and other initiatives, UNICEF has advocated for the development and introduction of better products to best fit programmes, some of which are relevant for iCCM. These are included in UNICEF's range of products.

This is a briefing note on iCCM products available through UNICEF and provides key references for further information.

2. AVAILABLE PRODUCTS

Please visit the [UNICEF Supply Catalogue](#) for more products and more details about the products listed below.

a. DIARRHOEA

Treatment. WHO/UNICEF recommends Oral rehydration and 10-14 days of Zinc supplementation in the clinical management of diarrhoea in children. Bundles of ORS and Zinc have been piloted successfully by organizations such as Population Services International (PSI), and are now being promoted as mainstream products for both public and private sector markets.

UNICEF offers a range of presentations of ORS and Zinc separately and in bundles (co-packs). Sources of the co-pack are still limited, but there are plans for more manufacturers coming on-board in 2014, including from Africa.

Short Description	UNICEF Cat. No.	Unit Cost ¹
ORS low osm. 20.5g/1L CAR/100 (Non-flavoured)	\$1561120	7.70
ORS low osm. 20.5g/1L CAR/100 (Flavoured)	\$1561130	9.70
Zinc 20mg scored tablets/PAC-100 (Blisters of 10x10)	\$1580020	1.30-2.51
ORS (2x1L) + Zinc co-pack (Each Co-pack contains 2 sachets of flavoured ORS/1 + 1 blister of 10 scored tablets of Zinc 20mg and a patient information leaflet)	\$1580022	0.50-0.58
ORS (4x0.5L) + Zinc co-pack (Each Co-pack contains 4 sachets of flavoured ORS/500ml + 1 blister of 10 scored tablets of Zinc 20mg and a patient information leaflet)	\$1580021	0.52-0.58

ORS 1 litre and 0.5 litre is also available in packs of 10x100 as per table below

¹ Prices are indicative. Ranges reflect a variety of prices in contracts.

INTEGRATED PSM PLANNING - EXPLORING SOLUTIONS

GROUP WORK

Country : _____

Strategic Area	Bottlenecks/challenges related to PSM for iCCM	Enablers of PSM for iCCM	Desired Outcomes	Linkages with national PSM strategic plan	Key Activities	Key stakeholders
Coordination, management & integration						
Selection						
Quantification (Forecasting & supply planning)						
Procurement						
Storage/Inventory management/ Distribution						
LMIS						
Use						
Human Resources						

INTEGRATED PSM PLANNING - EXPLORING SOLUTIONS

GROUP WORK (CONT)

I. In country groups (50 min)

- Using the matrix, identify the main bottlenecks or challenges related to PSM for iCCM across each domain or strategic area (e.g. coordination, management and integration; selection; quantification etc.). Use the iCCM PSM checklist for reference if needed to guide the discussion.
- Identify the enablers to address each of the bottlenecks you have identified.
- Determine as a group your desired outcomes for PSM of iCCM in each domain
- What linkages are there with the national PSM strategic plan?
- To address the challenges you have identified and achieve the desired outcomes, what are the key activities that need to be conducted?
- Who are the key stakeholders to work on this issue and keep things moving?
- How do these stakeholders coordinate on their activities and how could coordination be done better? Consider adding any additional information in the line of coordination, management and integration of the matrix.

INTEGRATED PSM PLANNING - EXPLORING SOLUTIONS

GROUP WORK (CONT)

- II. Present your analysis and plan to a small group of 3-4 countries.** After all countries have presented, identify the common major challenges. If a country has experienced similar challenges and has implemented interventions to correct the problem with success - share the experiences. Identify the main priority outcomes and the key activities across the countries. (40 min)
- III. Present the group findings to the plenary session:** the major challenges, some solutions that have been implemented with success, the priority desired outcomes and activities or next steps (30 minutes)

COUNTRY GROUPS

Group 1	Group 2	Group 3	Group 4	Group 5
Ethiopia	Cameroon	Uganda	Burundi	Burkina Faso
Ghana	Kenya	Nigeria	RCI	Madagascar
Zambia	Mozambique	Malawi	DRC	Mali
Tanzania	Somalia	South Sudan		Niger
Main Room	Main Room	Queen Palm	King Palm	Main Room
Atieno	Thomas	Upjeet	Jane	Eby