

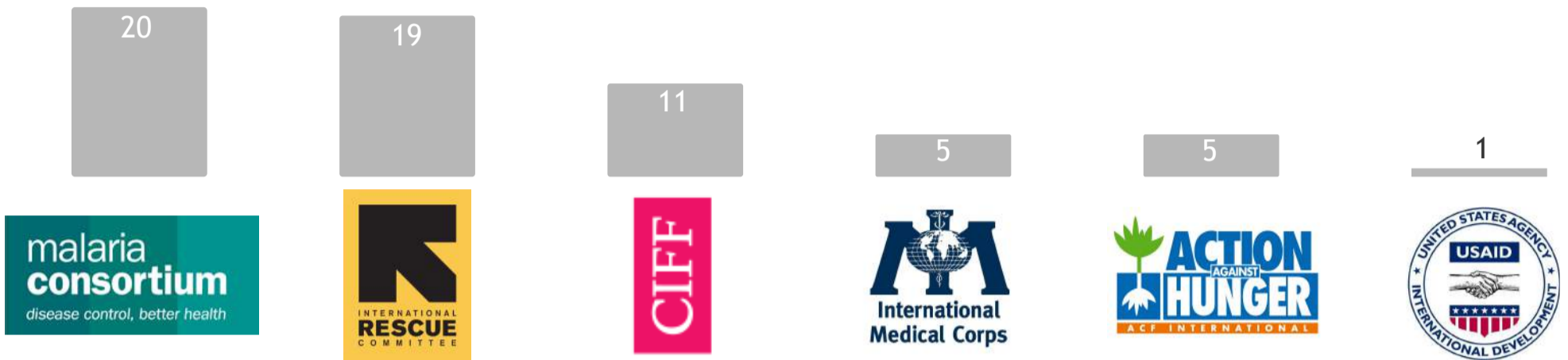
NUTRITION SUBGROUP ACTION PLAN SURVEY

The survey asked responders to review **30 questions** and rate them along the criteria of **Answerability, Research Feasibility, Deliverability and Importance/Potential Impact**.

A total of **17 persons** responded to the survey at least partially.

Participating agencies

Shown below are surveyed agencies by the number of questions supported.

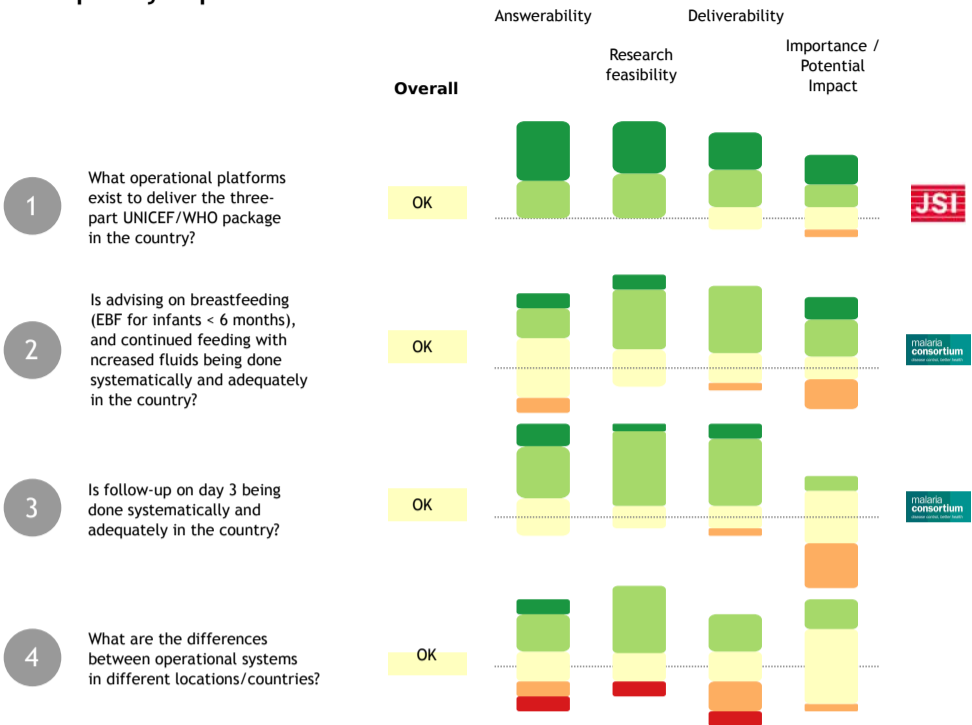


Questions ranked by score

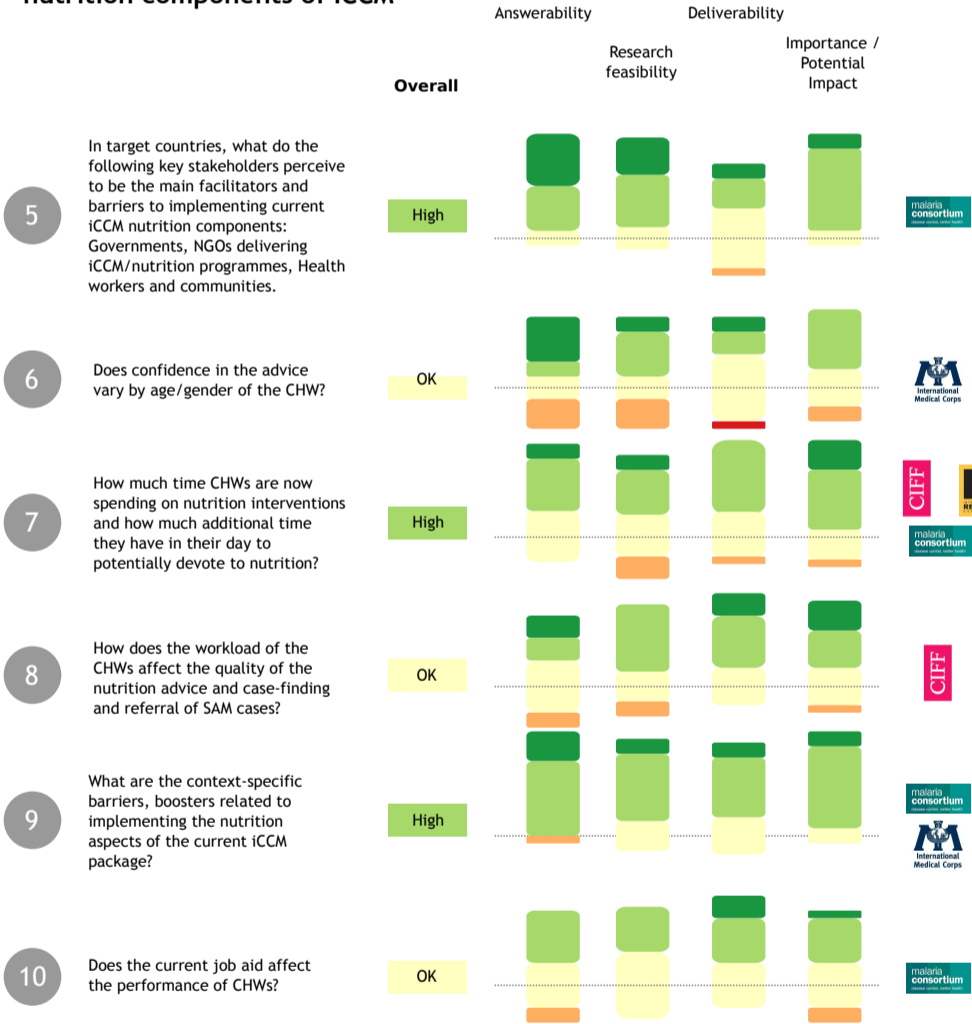


Results in detail

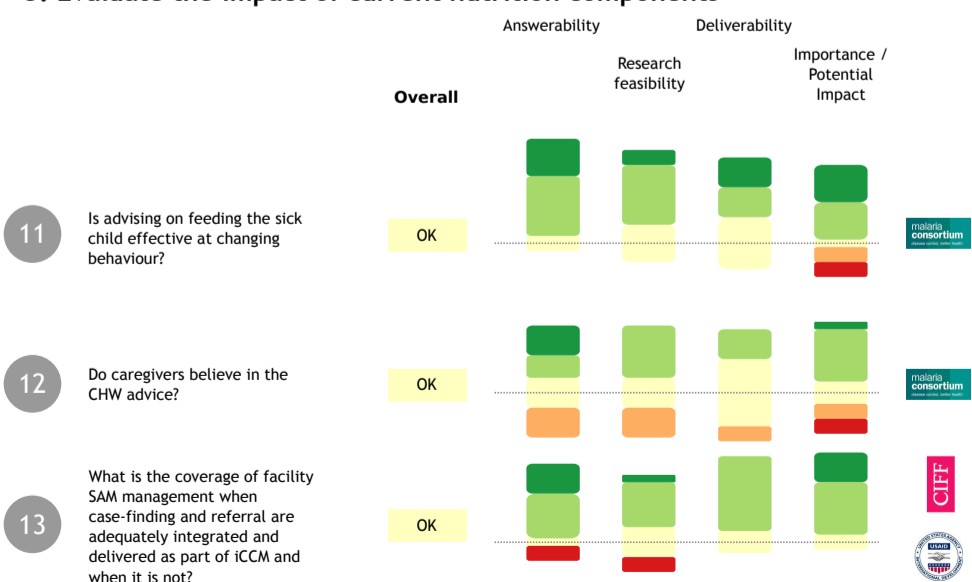
1. Mapping of contexts in which current nutrition components of iCCM are adequately implemented



2. Analysis of factors negatively affecting the implementation of current nutrition components of iCCM



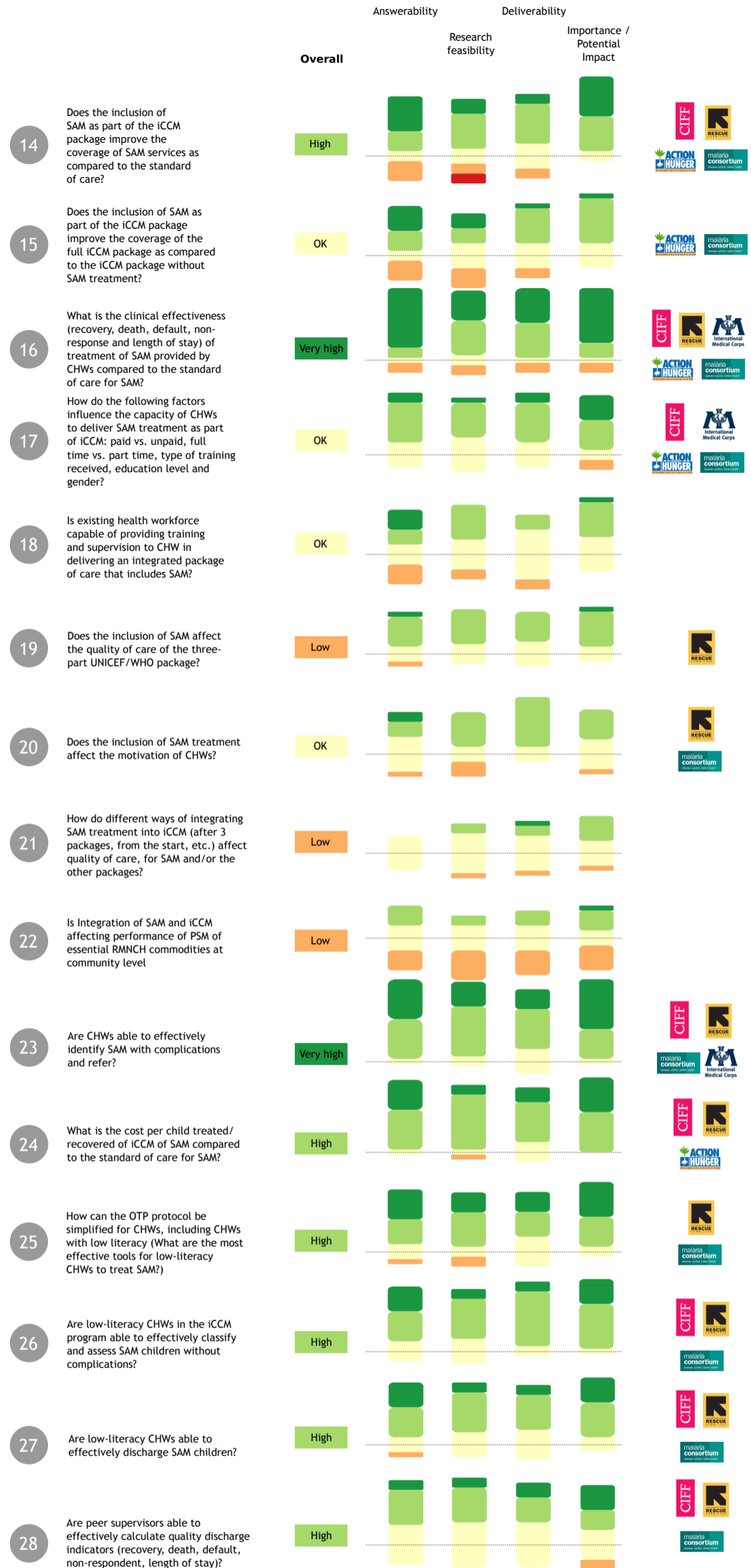
3. Evaluate the impact of current nutrition components



Key: Very high (Dark Green), High (Light Green), Medium (Yellow), Low (Orange), Very low (Red)

Rating based on aggregate score of responses, whereby answers were given a value from 5 (very high) to 1 (very low). Overall score is calculated as Sum of ratings x Number of respondents. The five categories for overall ratings were calculated on 20% segments of the maximum score (5780).

4. Evaluate the impact of integrating SAM treatment into the iCCM package



5. Evaluate the impact of integrating prevention of malnutrition and IYCF counselling components into the iCCM package improves coverage and quality of iCCM, and improves the continuity of care.

