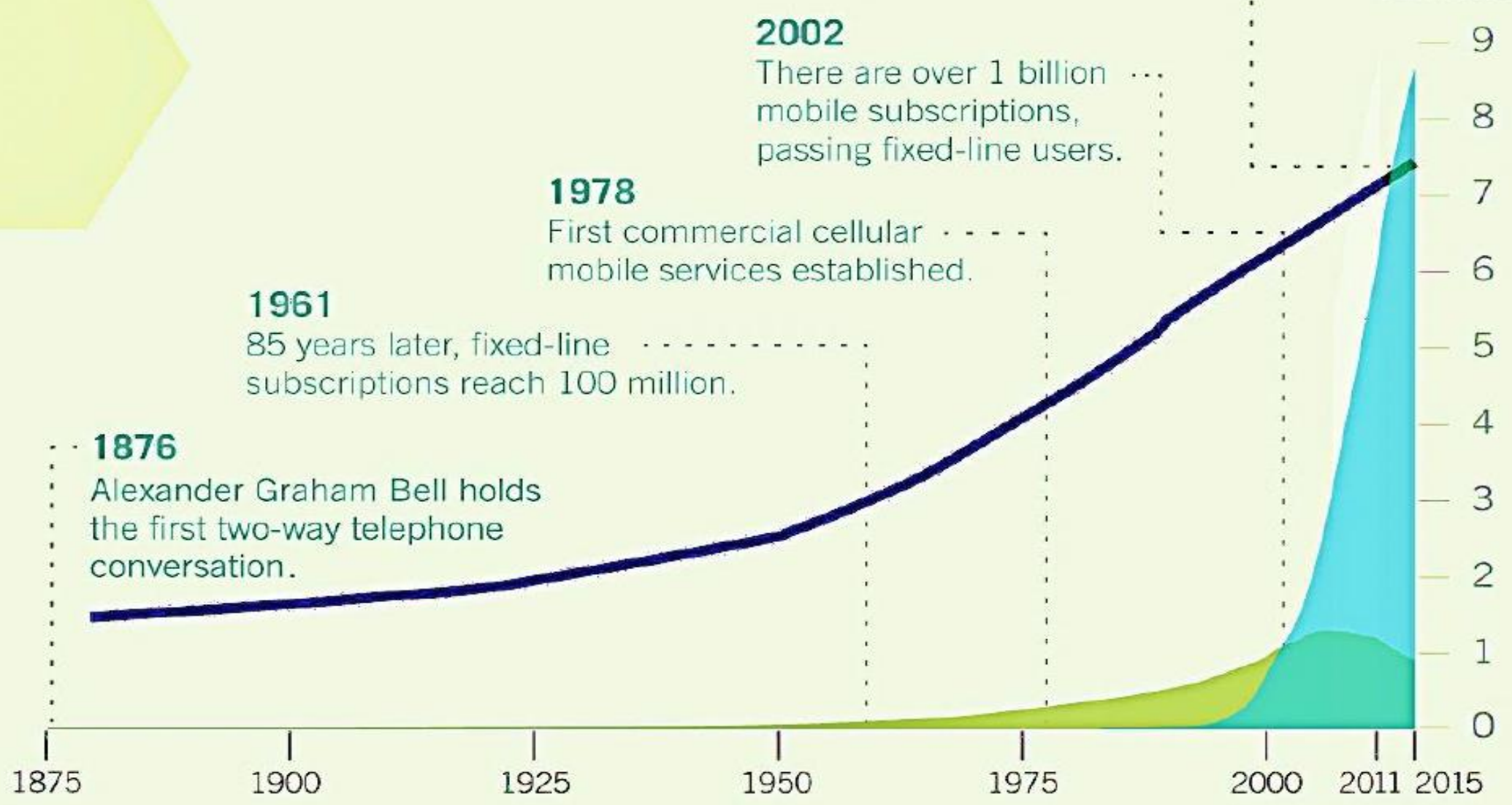


2011

The number of mobile subscriptions will soon overtake the world's population

BILLIONS



**2002**

There are over 1 billion mobile subscriptions, passing fixed-line users.

**1978**

First commercial cellular mobile services established.

**1961**

85 years later, fixed-line subscriptions reach 100 million.

**1876**

Alexander Graham Bell holds the first two-way telephone conversation.

GLOBAL POPULATION

FIXED-LINE SUBSCRIPTIONS

MOBILE SUBSCRIPTIONS

# mHealth doesn't work in a Vacuum



mHealth: an enabler, not an intervention

# MAMA

Mobile Alliance for Maternal Action

# Global PPP

## Initiative

**Expectant women/  
new mothers sign  
up for service**



**Users receive 2  
health-related  
messages weekly**



**Partner advertising and  
advocacy will drive  
subscription levels**



*"If you have any  
bleeding during this  
month, seek medical  
attention right away"*

*"Your baby needs an  
immunization this week  
to stay healthy:  
Available free at all  
EPI clinics"*







# "SMS for Life"

Improving medicine access through innovation



T.1 02:05pm

SMS for Life: Please send in your stock counts of ALs, RDTs as soon as possible. Reply to this message or text 8428. Thank you, DMOH

Options Reply Exit



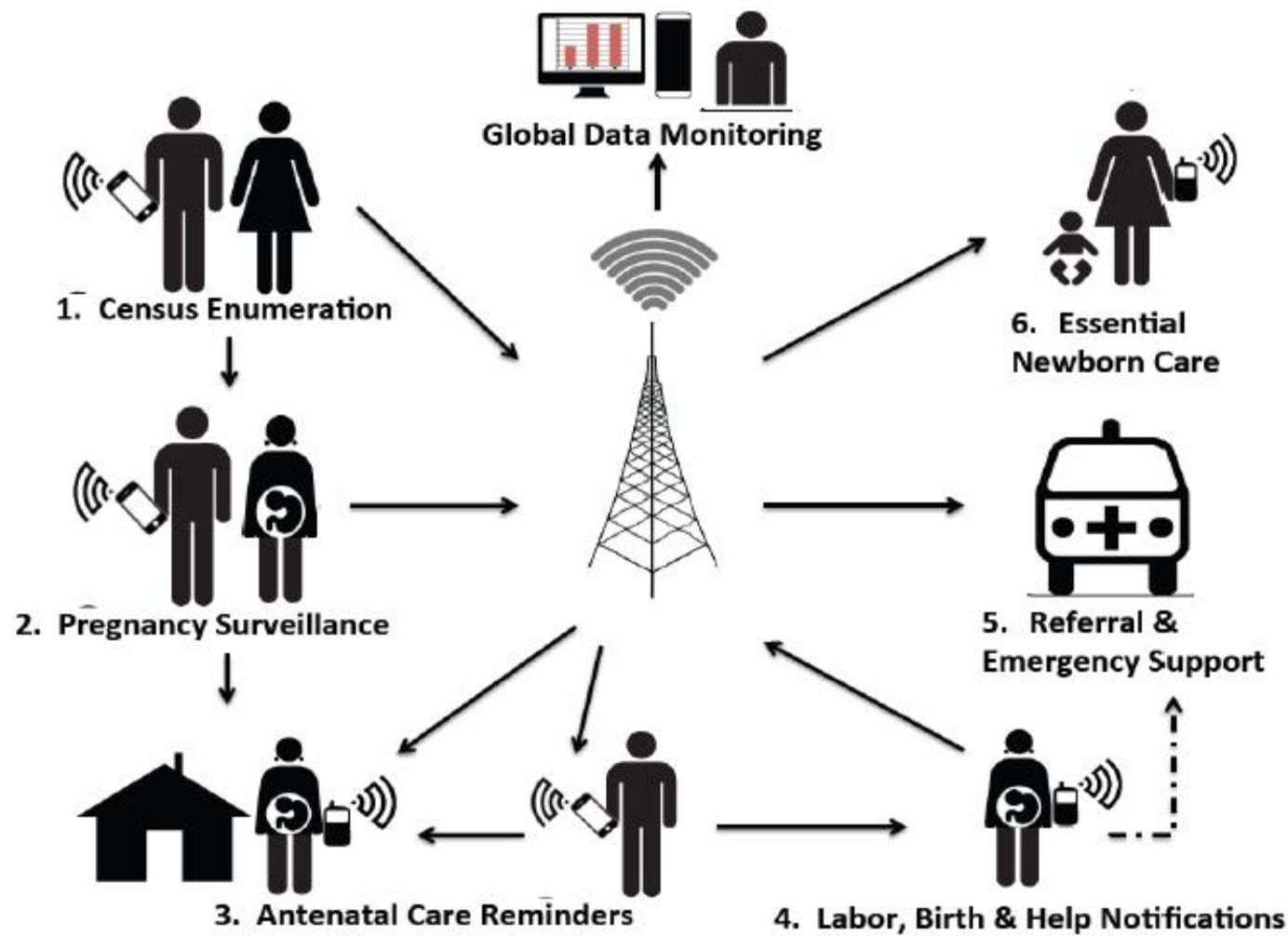
## "SMS for Life"

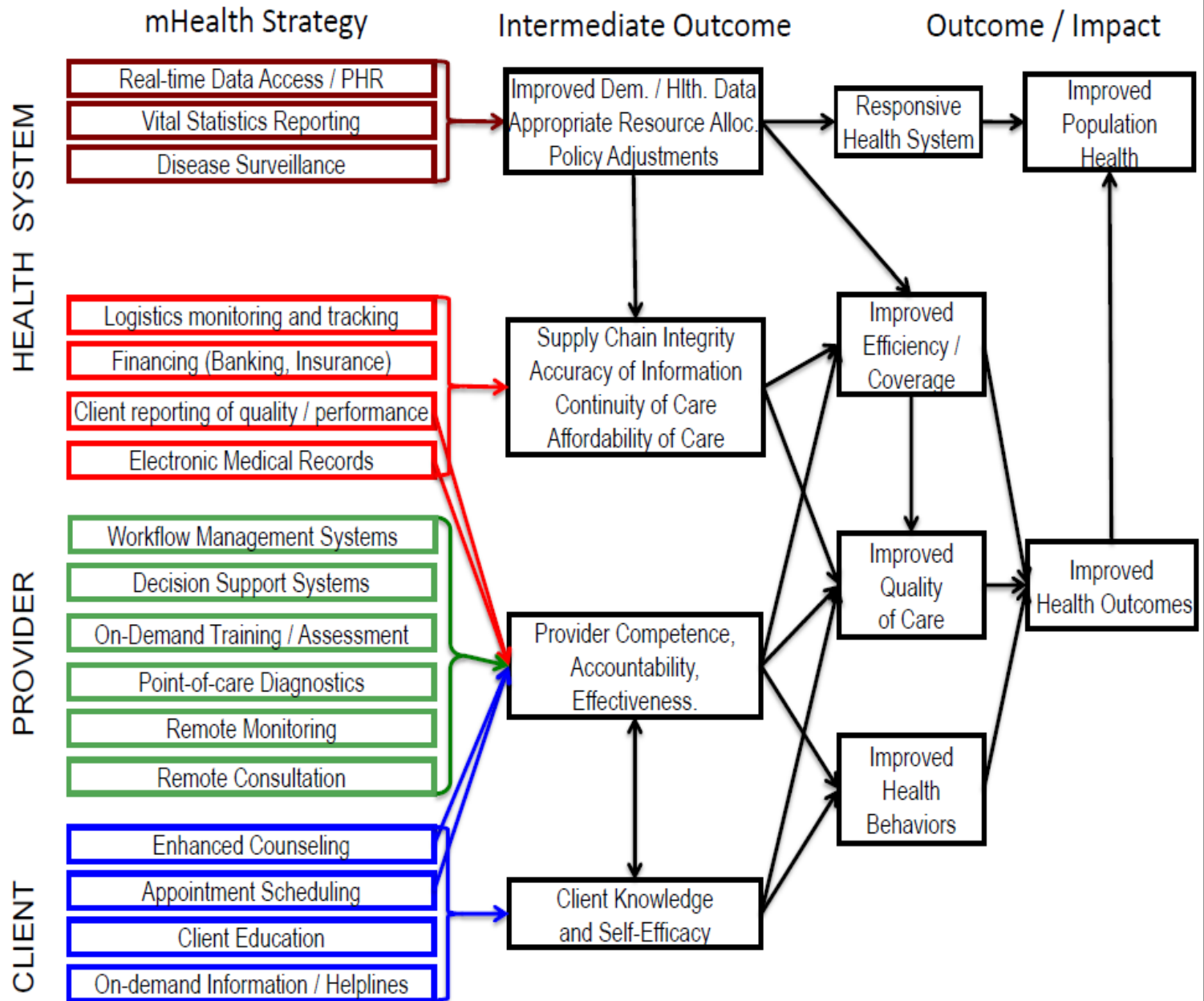
A Roll Back Malaria Partnership Initiative

- 1 Pata SMS ununuzika hatua za  
za ku ya matibabu
- 2 Inasaba Acha ya Watoto
- 3 Andika matibabu za  
"SMS for Life"
- 4 Pata msaada wa Matibabu za  
ku ya



# mCARE: Community-Health Worker System to improve delivery of ANC/PNC and increase client demand





<b>Patient registration</b>	<b>Clinical Decision Making</b>
<b>Patient assessment</b>	<b>Checklists</b>
<b>Patient monitoring</b>	<b>Mobile Learning</b>
<b>Work planning</b>	<b>Care Coordination</b>
<b>Counselling</b>	<b>Compensation</b>
<b>Social Networking</b>	<b>Performance Tracking</b>



**mHealth Evidence**  
by **KHealth**

MHEALTH EVIDENCE TAXONOMY TRANSLATE

SIGN IN REGISTER

Browse All Records Advanced Search About Partners

### Search the world's mHealth Evidence

Currently indexing almost 6000 global evidence sources

Search

#### What is mHealth Evidence?

mHealth is the use of mobile information and communication technologies for improving health. It can be used for a wide range of purposes, including health promotion and illness prevention, health care delivery, training and supervision, electronic payments, and information systems. Many believe that it has the potential to shift the paradigm on when, where, how and by whom health services are provided and accessed.

But mHealth is a young field and much of the evidence on "what works" is still emerging. Even the evidence that exists can sometimes be difficult to find.

#### BROWSE MHEALTH EVIDENCE TOPICS

- Beneficiary Age Range
- Care Model
- Health Domain
- Health System Constraint
- Location
- mHealth Application
- Special Population
- Stage of Development
- Stage of Evaluation
- Target User
- Technology

#### VIEW MOST RECENT RECORDS

- Temporal motifs reveal homophily, gender-specific patterns, and group talk in call sequences.
- Tobacco smoking surveillance: is quota sampling an efficient tool for monitoring national trends? A comparison with a random cross-sectional survey.
- Mobile Phone-based Syndromic Surveillance System, Papua New Guinea.
- Design and Test of a Hybrid Foot Force Sensing and GPS System for Richer User Mobility Activity Recognition.
- Mobile phone tracking: In support of modelling traffic-

mHealthEvidence.org

# MREGISTRY.ORG

## A Global mHealth Registry

This form will allow you to quickly be entered into a processing queue for inclusion in the WHO Global Registry of Projects focusing on activities that leverage mobile and information/communications technologies and associated content to strengthen community and frontline health workers.

What is the Project Name? \*

What is the Project Location? \*

Please enter the main city in which the project operates

Latitude (xy °)

Longitude (xy °)

Brief Project Description (Optional)

What stage of activity are you in? \*

- Conceptual Stage
- Planning and Fundraising
- Pilot/Test Implementation

# mHealth Expert Learning Program (mHELP)



To guide people around the commons, linking them with skills, contacts & resources.

## **FREE SERVICES:**

- Free online question answering service
  - “Second level support” for lists
- Focussed advice (up to 4 hours)
- “How To” guides for key issues
- “App store” Comparison of different systems & providers (comment, ratings, ‘Which’)
- “Market place” link supply & demand (might have freemium match-making)

## **PAID SERVICES:**

- Technical Assistance & consulting
- University certified training