



Meeting Objectives

Institutionalising integrated community case management (iCCM) to end preventable child deaths

A technical consultation and country action planning for high burden countries

Addis Ababa

22-26 July 2019

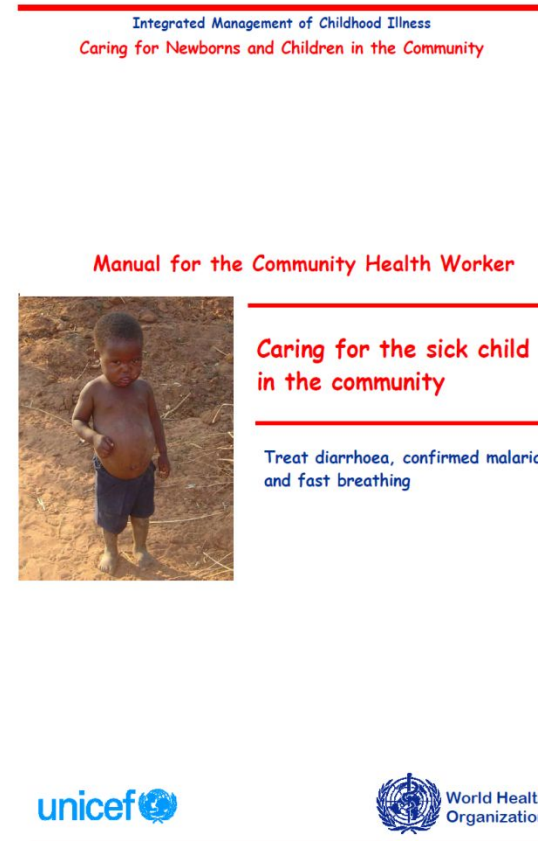
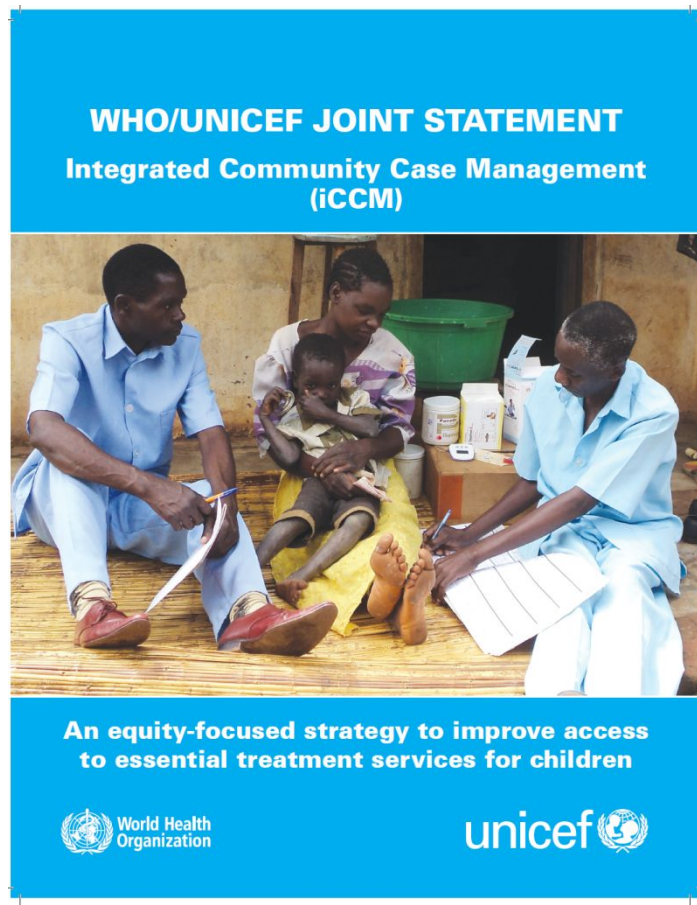


Why iCCM?

Coverage of life saving interventions, especially in sub-Saharan Africa is still unacceptably low due to inaccessible or poor quality of care.



- Recommended by WHO to increase access to life-saving interventions for remote and vulnerable populations
- Key strategy to achieve universal health coverage and greater equity as part of the Sustainable Development Goals





- Proper assessment of the child by CHW
- Correct classification of pneumonia, malaria and diarrhea
- Use of ORS, zinc, antibiotics, anti-malarials



iCCM includes:



1. Prompt family recognition of signs of illness
2. Prompt seeking of care from the CHW
3. Proper assessment of the child by CHW
4. Correct classification
5. Use of ORS, zinc, antibiotics, antimalarials
6. Referral of severe cases
7. Counseling for adherence to treatment or referral

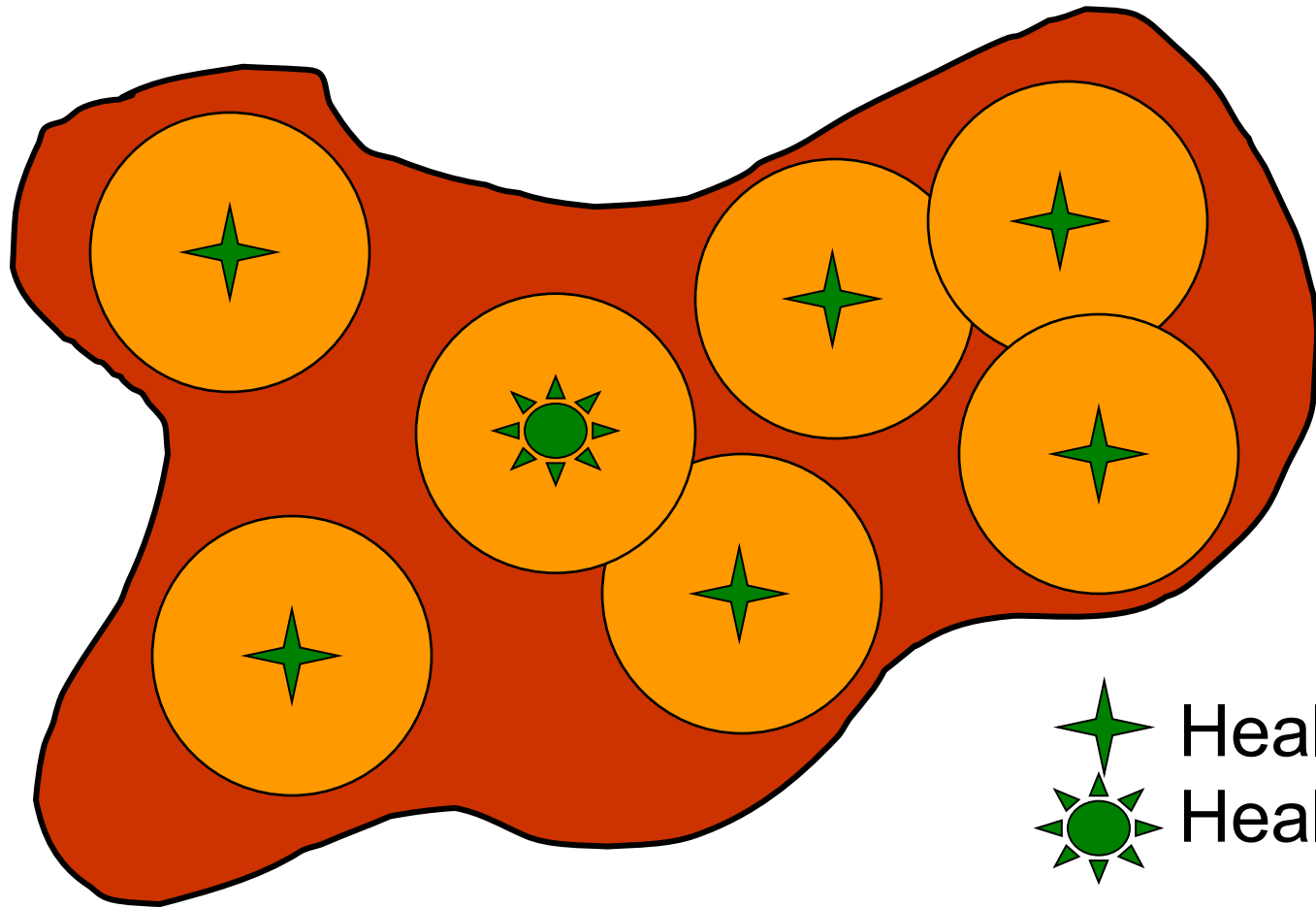
Main iCCM sub-strategies



- Equip and train *Ministry of Health* staff at clinics to:
 - **Provide standard case management.**
 - Support, supply and supervise community health workers.
- Equip and train community health workers to:
 - Diagnose and treat uncomplicated illnesses and refer severe illnesses
 - Manage small drug boxes.
- Train families to:
 - Recognize and seek prompt treatment.
 - Complete the treatment or accept referral for severe conditions.

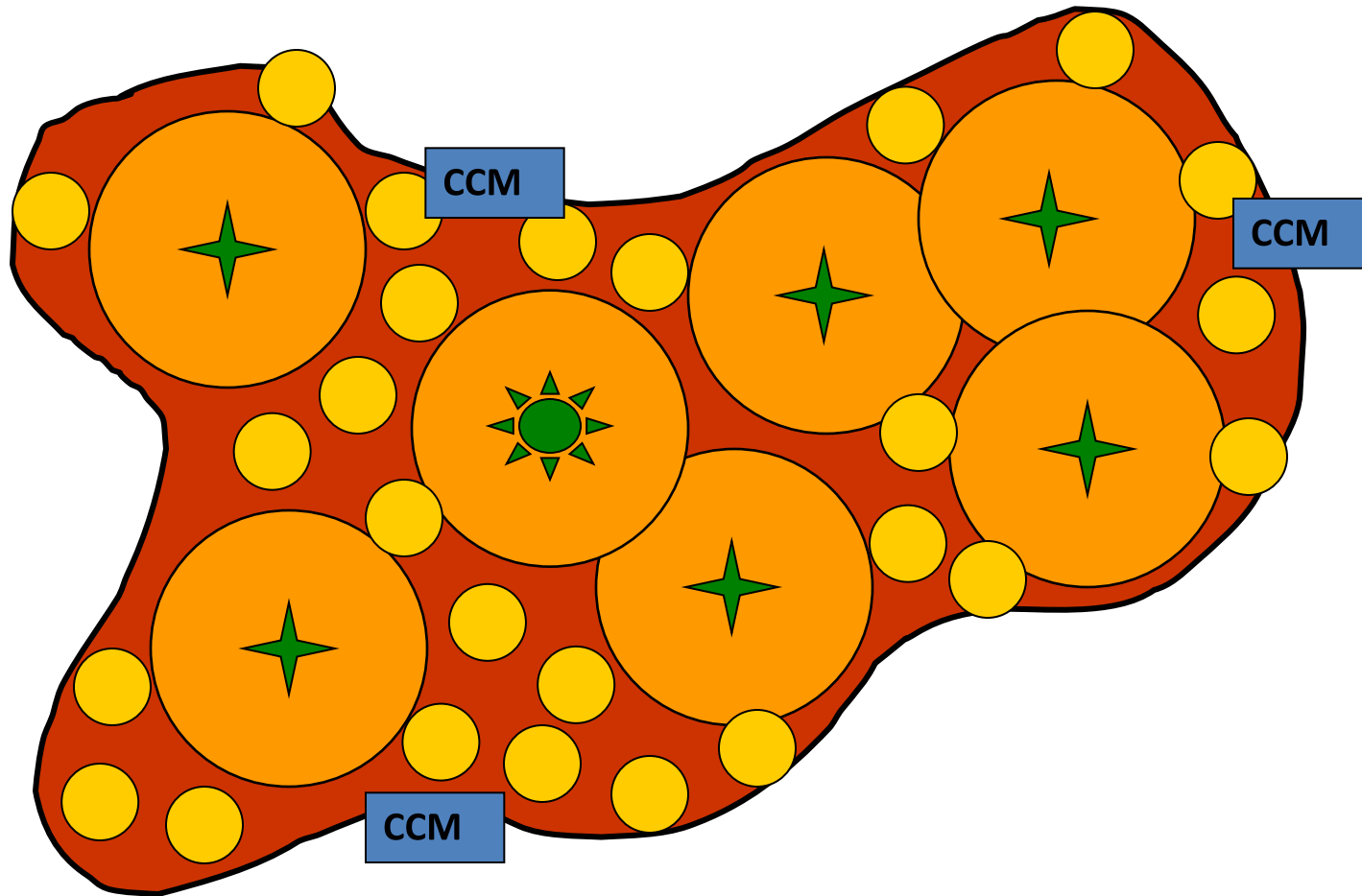


Health facilities w/5km radius catchment areas



★ Health post
★ Health center

CCM Brings Care Closer to Children





The objectives of this meeting are to:

1. Review the recent learnings related to implementation of primary health care at community level including integrated community case management of childhood illness, as well as new guidelines on community health workers;
2. Identify needs and gaps around sustainable financing of iCCM.
3. Define guiding principles and develop recommendations for embedding iCCM within community health systems as core to Primary Health Care system.
4. Review progress, key bottlenecks and priorities to update national iCCM implementation plans in the context of recent learning to guide the High Burden to High Impact response and broader child health programming, as well as Global Fund applications and other resource mobilization efforts.



- A set of recommendations for institutionalizing iCCM within the broader community health systems and countries' child health policies and programmes;
- Draft updated national iCCM implementation plans, including plans for domestic and external financing for PHC at community level