

High Burden High Impact (HBHI) – country engagement

Addis Ababa, 25 July 2019



World Health
Organization



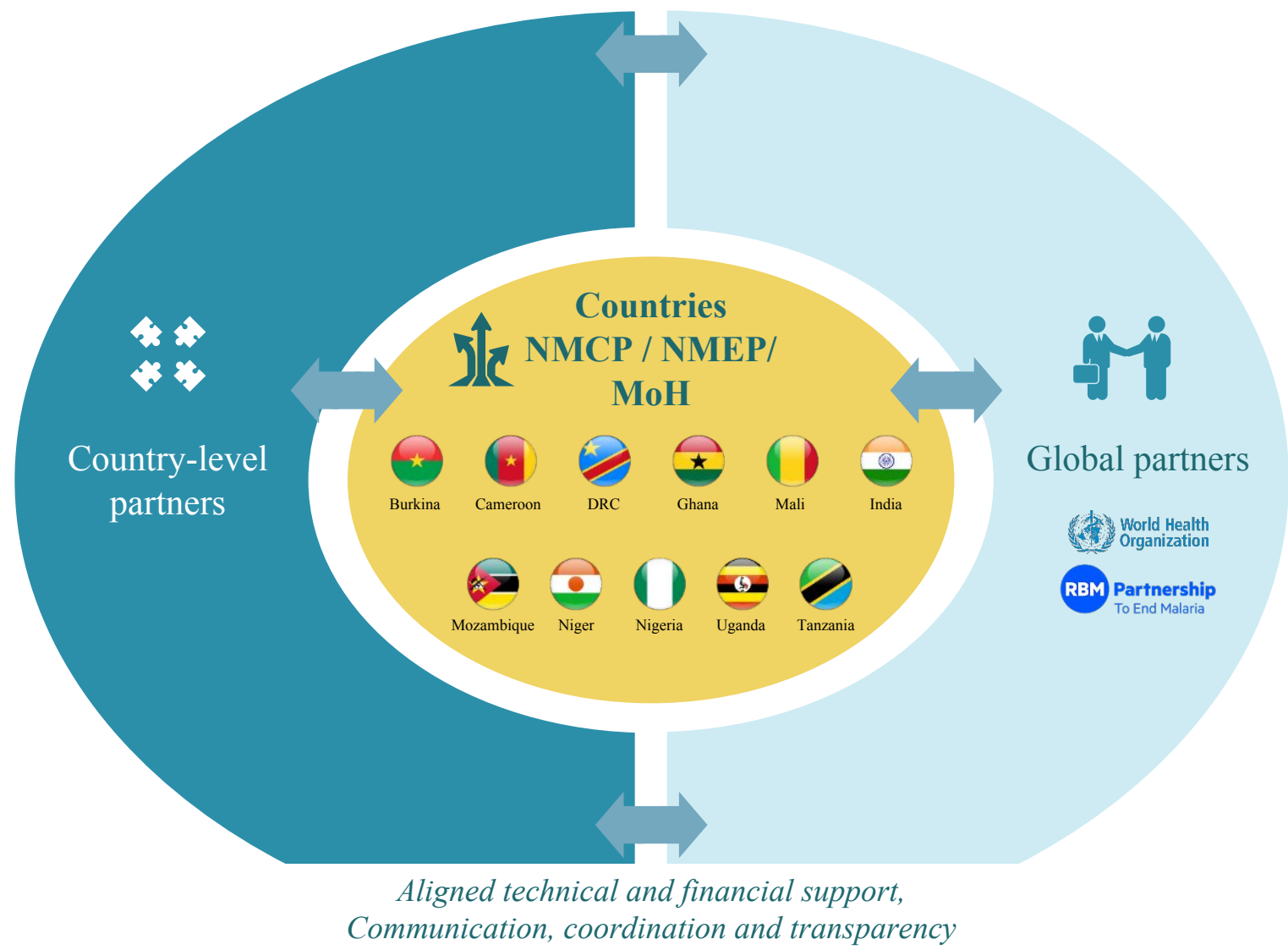
Partnership
To End Malaria

HBHI country engagement process

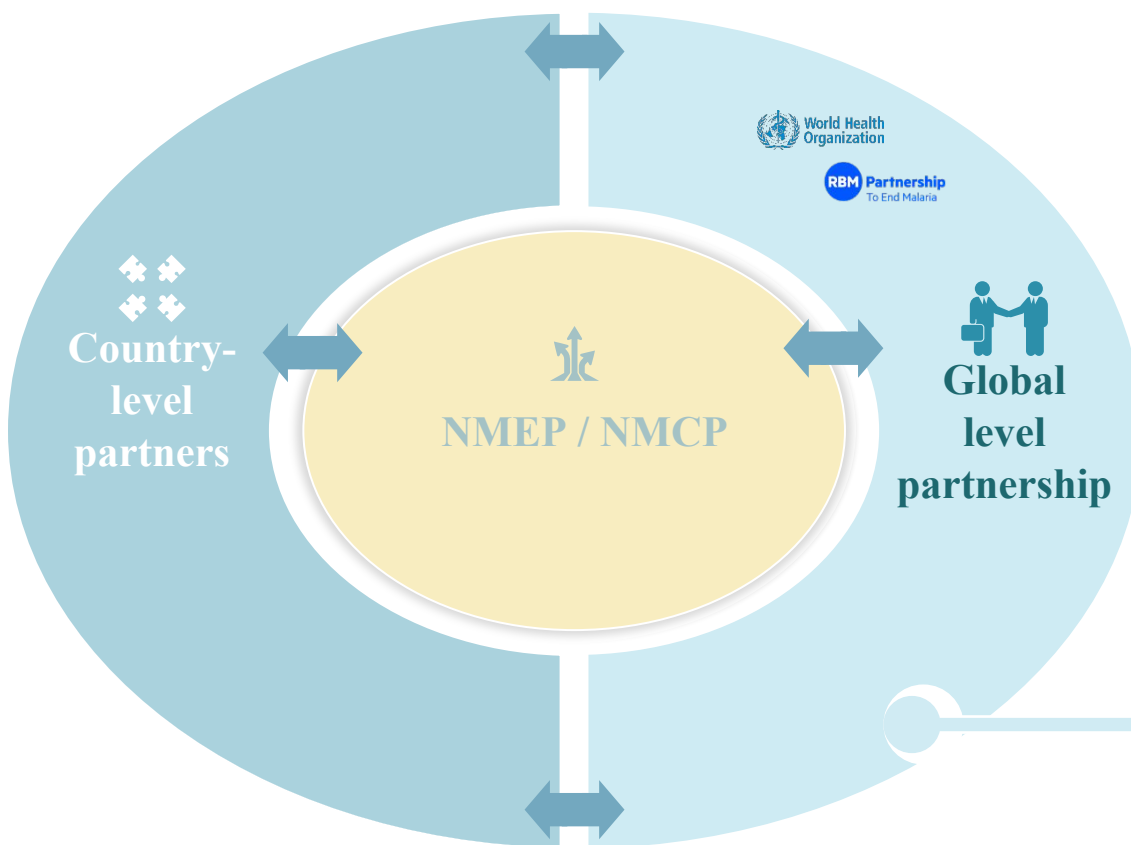
The need to change the way we, as malaria community, **shape and communicate on the burden and impact of malaria**

- Malaria not in the media headlines or national response. e.g. **Cholera vs malaria**
- **Story making on the burden:** E.g. in Wakiso district, Uganda: **109 deaths due to malaria vs 2 deaths in 2018**. The District Health Officer knows those differences but thinks malaria is not a priority compared to HIV/AIDs
- **Economic and social impact:** recent studies in Ghana show ~\$2 million cost per district (out of pocket, public cost, etc)

Country level and global partners support countries for a smooth HBHI approach

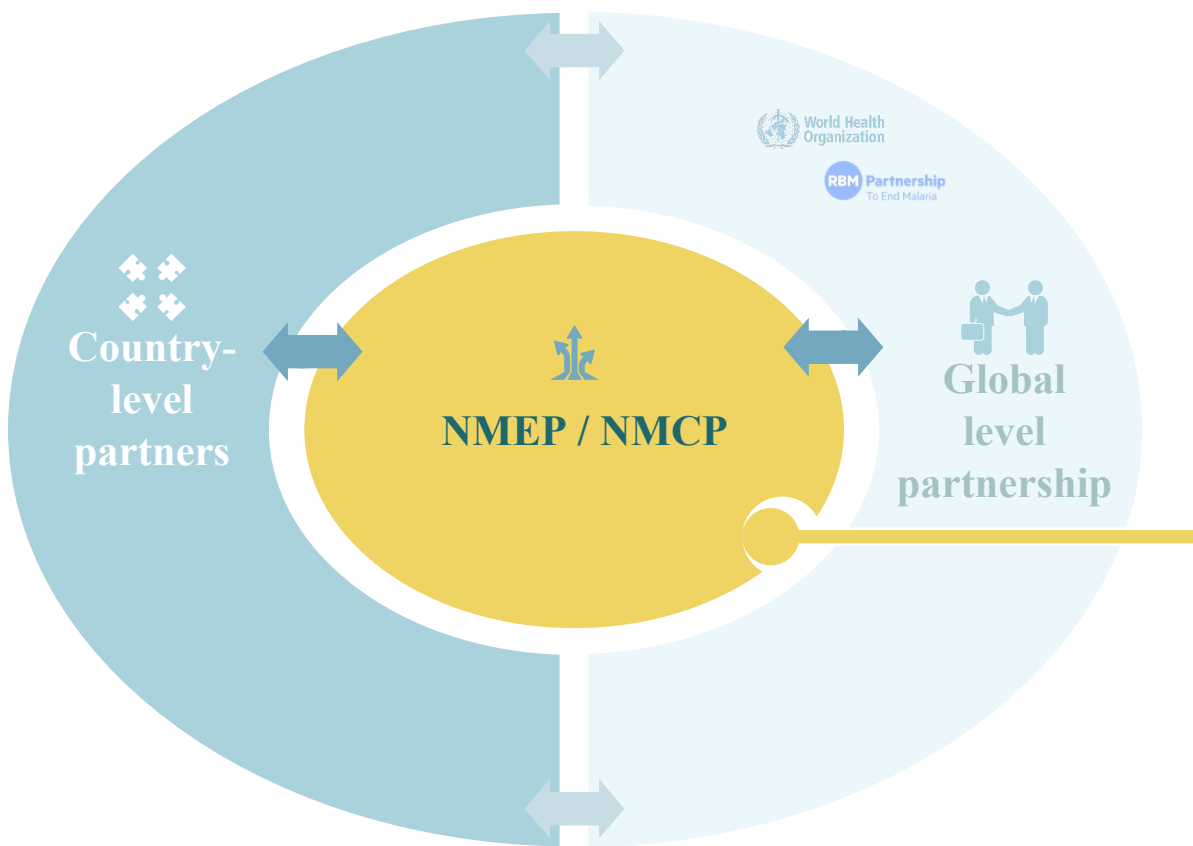


Detailed working modalities among partners on HBHI approach (3/3)



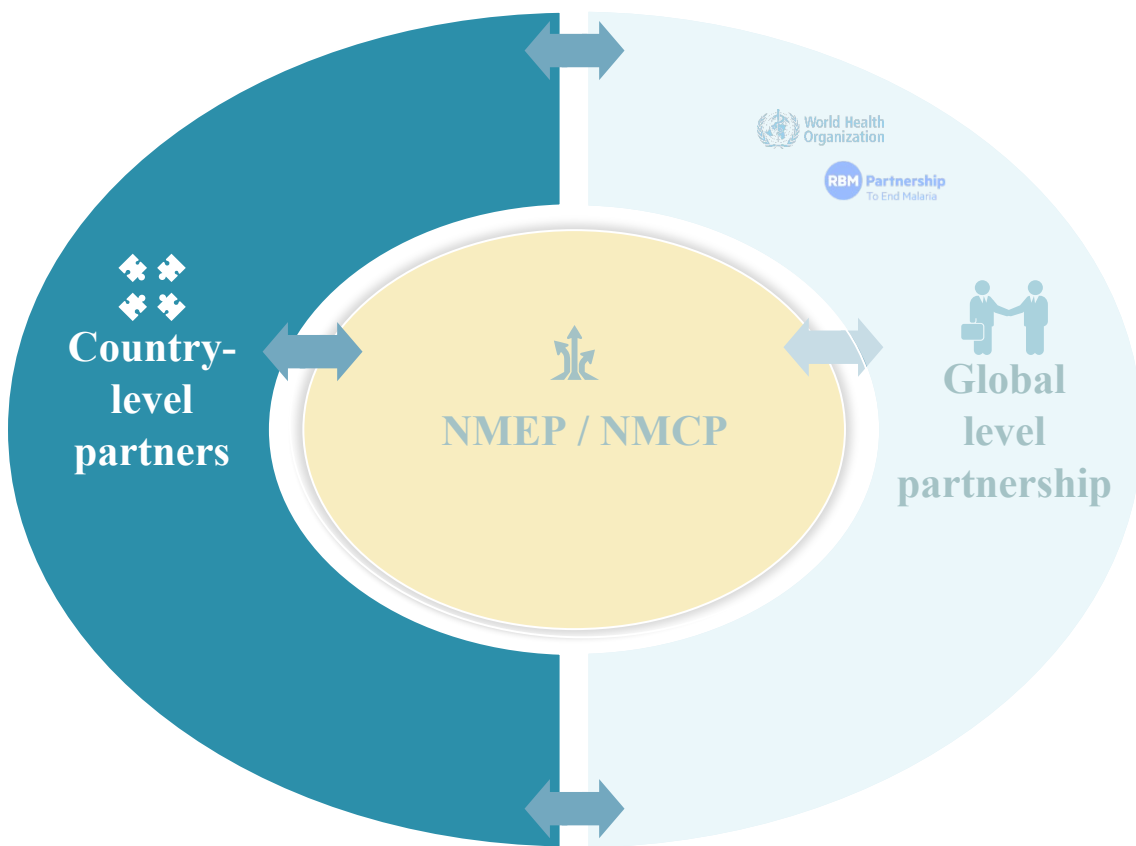
- Create platform for effective collaboration
- Communicate with global partners and their networks
- Provide regular updates to respective agencies and RBM partnership
- Ensure sharing of best practices across countries and with partners

Detailed working modalities among partners on HBHI approach (1/3)



- Leadership role in establishing commitment and refocusing activities to accelerate progress on GTS milestones
- Organize and facilitate meeting
- Ensure execution of actions post-meeting as part of NSP, prioritization, budgeting and implementation of the national malaria response

Detailed working modalities among partners on HBHI approach (2/3)



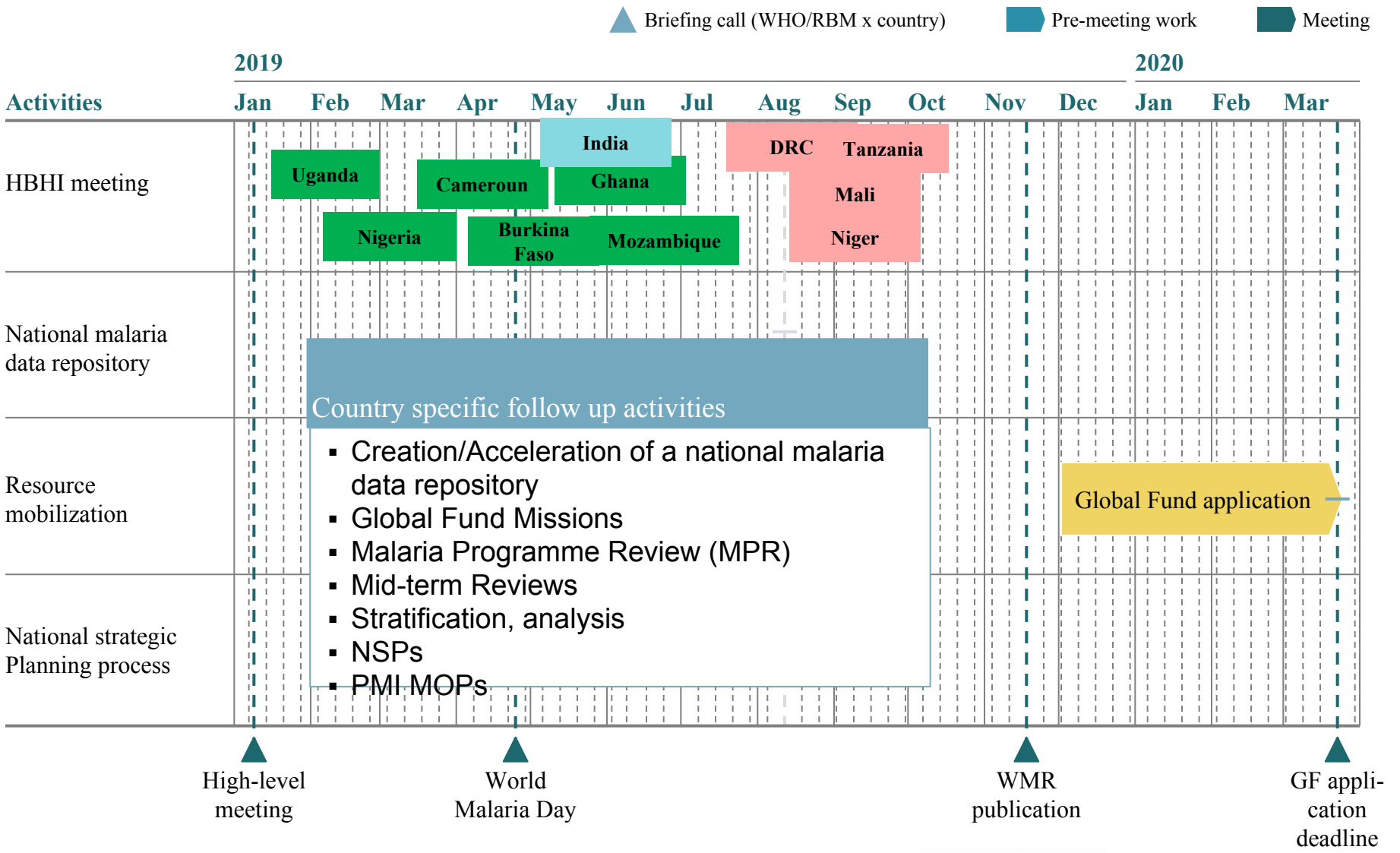
- Align technical assistance and resources
- Provide information on current activities and support as required
- Actively participate in working sessions
- Implement agreed activities, under government stewardship
- Support countries in pre-work, meeting and follow-up actions

Country engagement on HBHI happens through 3 major phases

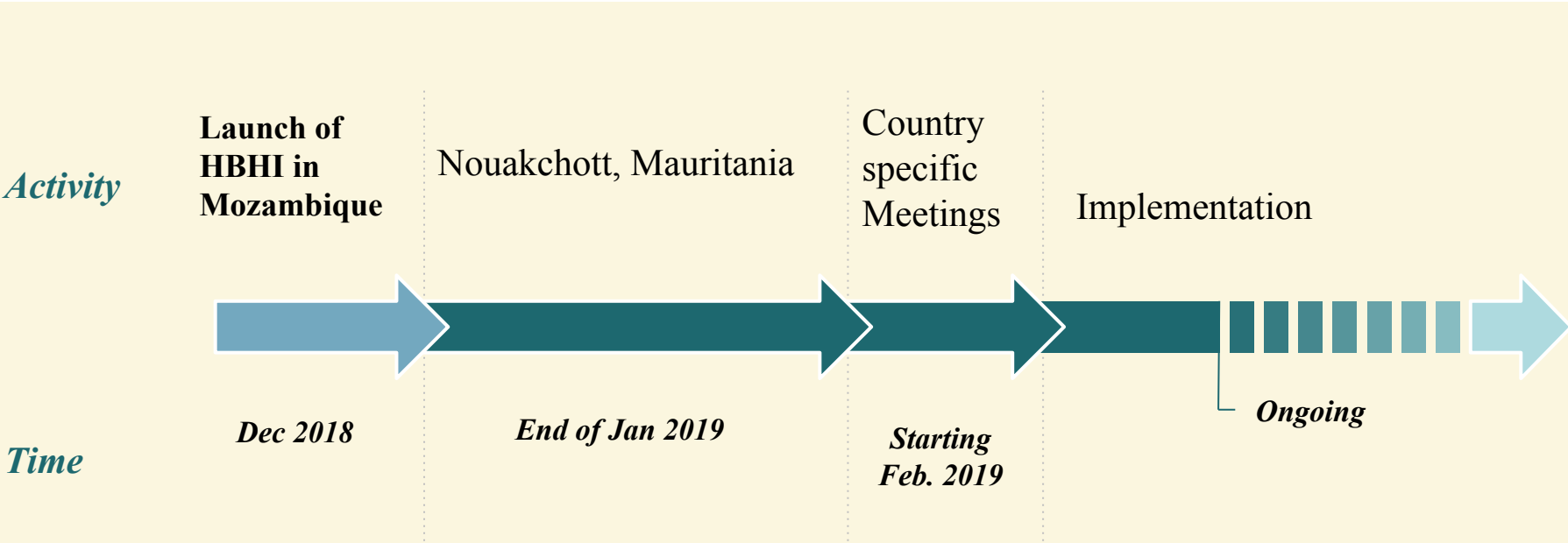
	2-4 weeks Meeting pre-work	1 week Meeting	Ongoing Effective action
	<i>Country-led self-assessment and identification of gaps</i>	<i>Elaboration of tangible actions to fill gaps</i>	<i>Implementation and follow-up</i>
Guiding questions	<ul style="list-style-type: none"> Who are the malaria partners and stakeholders? What is currently being done to end malaria? What works well? What gaps and challenges exist? 	<ul style="list-style-type: none"> What has been successful to date? What can be done to address gaps affecting achievement of country? Who will take which action when? What are the are 	<ul style="list-style-type: none"> What actions being implemented? If not, what action is needed to facilitate? Where is further support from stakeholders and partners needed? Is there regular follow-up at country and global level?
Products	<ul style="list-style-type: none"> Stakeholder mapping Preparatory self-assessment for each of the 4 response elements (guided by log frame) Meeting organizational material (invites, agenda) 	<ul style="list-style-type: none"> Needs assessment for 4 response elements (defining roles, responsibilities and activities for tangible activities based on self-assessment and analysis of interventions and bottlenecks) 	<ul style="list-style-type: none"> Inputs to NSP and operational plan revision based on next steps under all 4 response elements Funding, technical support and capacity building aligned with priority strategic planning Analysis of impact, bottlenecks
Support material	<ul style="list-style-type: none"> HBHI briefir Templates 1, 2, 3, 4, 5, 6, 7, 8, 9, 10, 11, 12, 13, 14, 15, 16, 17, 18, 19, 20, 21, 22, 23, 24, 25, 26, 27, 28, 29, 30, 31, 32, 33, 34, 35, 36, 37, 38, 39, 40, 41, 42, 43, 44, 45, 46, 47, 48, 49, 50, 51, 52, 53, 54, 55, 56, 57, 58, 59, 60, 61, 62, 63, 64, 65, 66, 67, 68, 69, 70, 71, 72, 73, 74, 75, 76, 77, 78, 79, 80, 81, 82, 83, 84, 85, 86, 87, 88, 89, 90, 91, 92, 93, 94, 95, 96, 97, 98, 99, 100 	<ul style="list-style-type: none"> Meeting facilitation package Templates for next steps logframe 	<ul style="list-style-type: none"> Best-practice library for selected activities
Additional WHO/RBM partnership support as required	<ul style="list-style-type: none"> Resources and technical support for self-assessment exercise Meeting organization support 	<ul style="list-style-type: none"> Meeting facilitation support 	<ul style="list-style-type: none"> Meeting documentation support Ongoing engagement in follow-up and coordination

Based on the four response elements

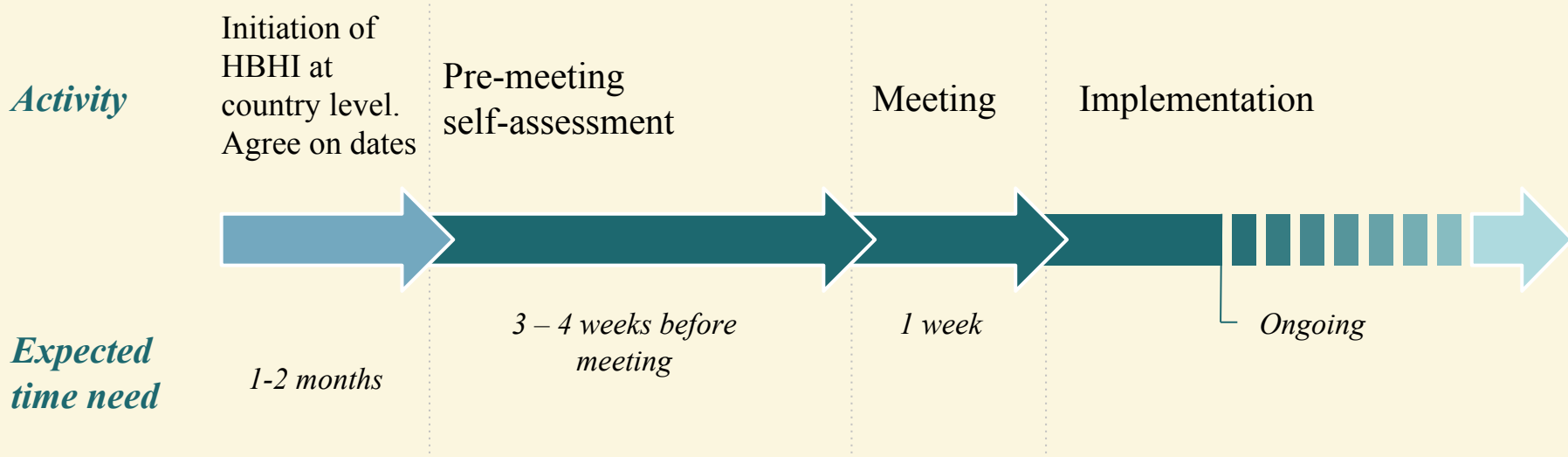
Country-led HBHI work and meeting are integrated and feed into existing country malaria milestones and activities



HBHI activities from launch



Approximate timeline for country-led HBHI work

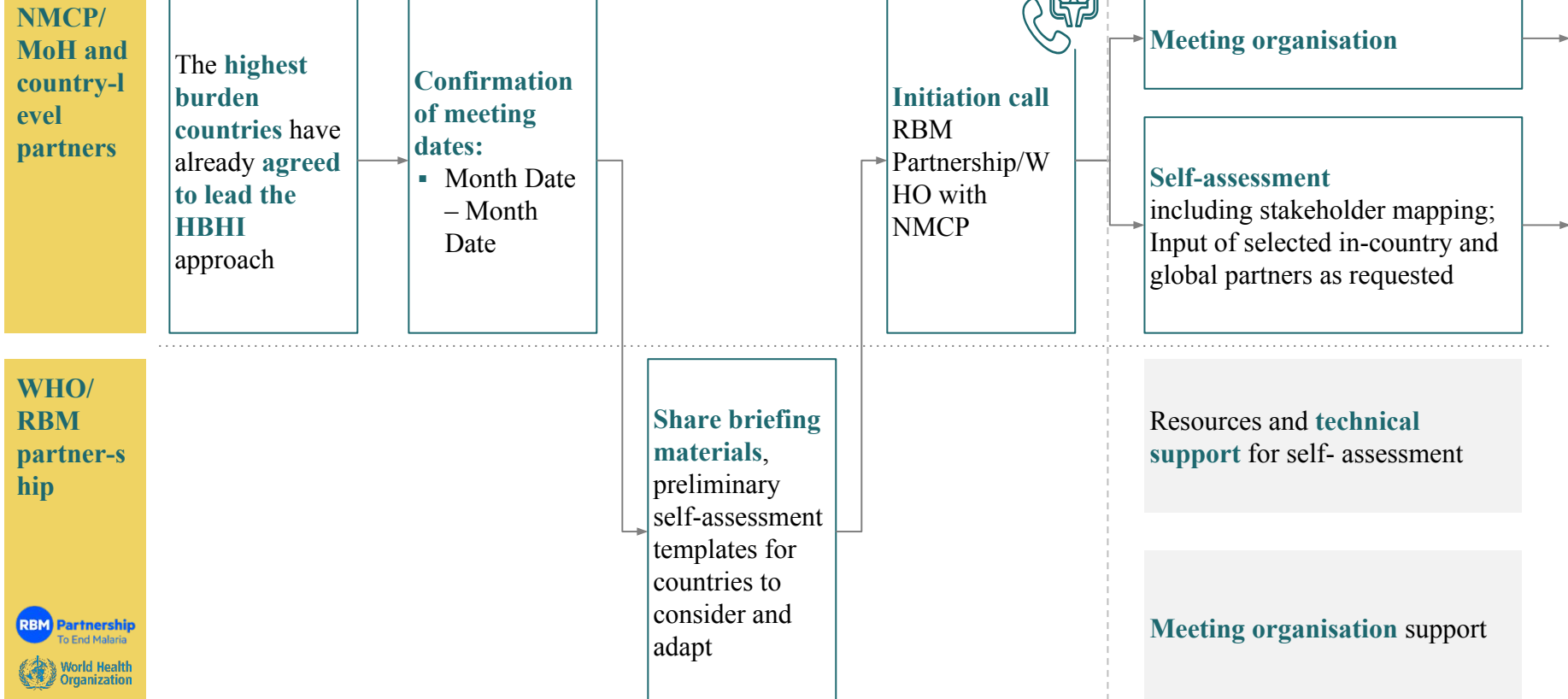




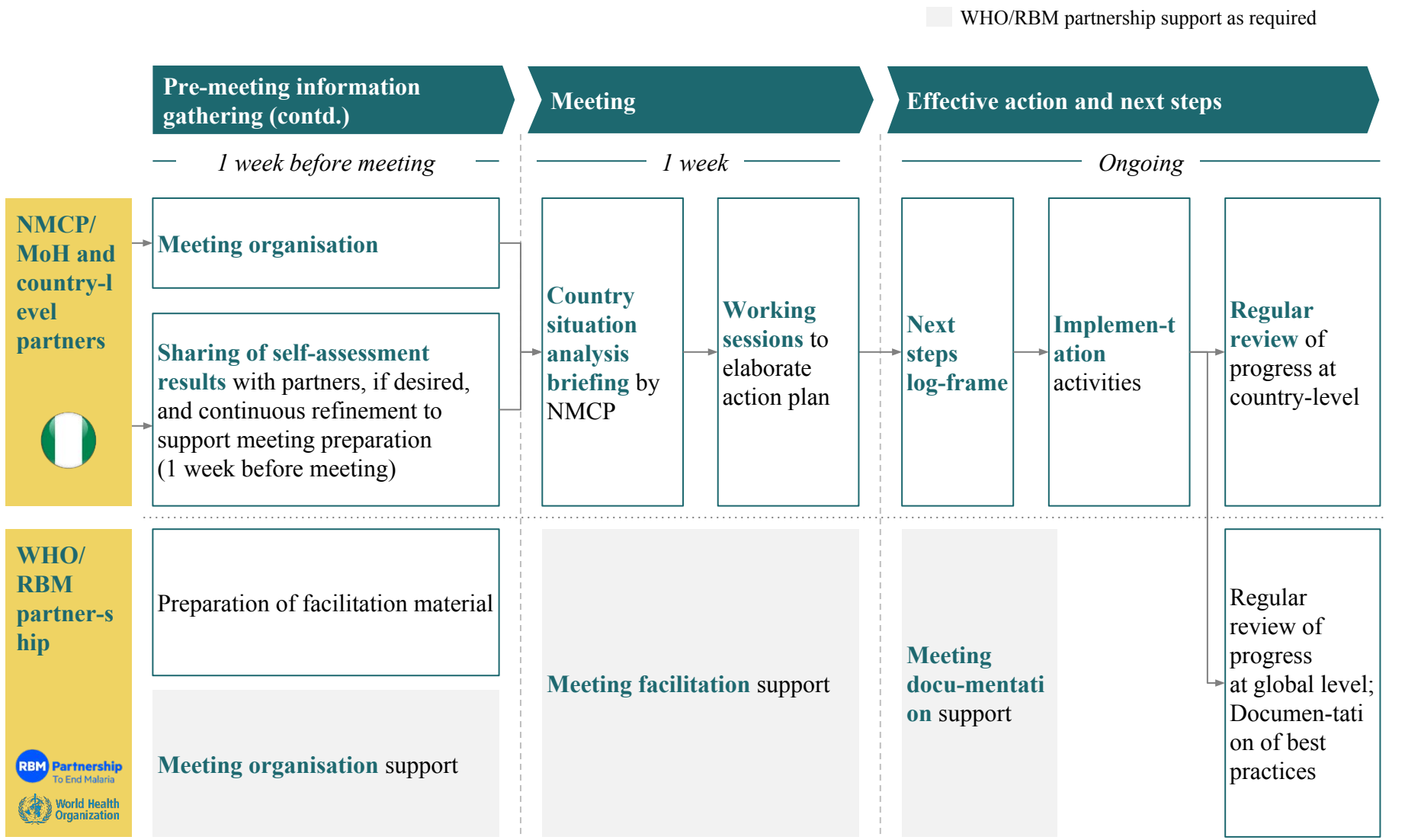
Suggested workflow for country-led HBHI work; partnership support available throughout for preparation, facilitation and next steps (1/2)

HBHI initiation at country level

Pre-meeting information gathering



Suggested workflow for country-led HBHI work; partnership support available throughout for preparation, facilitation and next steps (2/2)



Guiding principles and steps for initiating partnership support on HBHI country engagements

Principles of engagement



- 1 The process is **country-initiated and country-led** with strong country stewardship and broad-based stake-holder participation
- 2 WHO/RBM partnership **support**, if required, can be **requested by NMCP**
- 3 All high burden **countries** are **eligible**

Initiating WHO/RBM partnership support process



- Several types of support for country-led HBHI work are possible:
- **Technical support for country self-assessment**, and partner mapping
 - **Meeting organization support**, e.g., outreach to local and global partners
 - **Meeting facilitation support**, e.g., preparation of materials, identification of meeting venue
 - **Meeting documentation support**, e.g., meeting report, support with putting together action plans

HBHI background and objectives

HBHI country engagement process

Modules to support HBHI country engagement

HBHI country meetings have 3 core objectives, which are supported by a number of success factors

Planned outcomes



- 1 Focus on **identification of tangible next steps** through **well-guided working sessions**
- 2 Foster **collaboration and commitment** among relevant country partners at global, national and sub-national level
- 3 Lead to **agreements on next steps** to be implemented with broad partner support (e.g, increased transparency through data sharing)

Success factors



- Detailed **situation analysis** and **identification of relevant gaps**
- **Identification and involvement** of relevant external and internal **stakeholders early on**
- Ensure **broad participation including sub-national stakeholders**

Optional agenda suggestion: country meetings typically last 3-4 days and focus on identifying tangible next steps together with partners

Pre-meeting

Meeting

Follow-up

ILLUSTRATIVE - NOT
EXHAUSTIVE

Agenda item

Lead

Day 1

- Welcome and introductions
- Introduction to HBHI
- Update from Ministry of Health on country malaria status and briefing on results of pre-meeting situation analysis
- Introduction to working sessions and methodology

- NMCP/MoH
- WHO/RBM
- NMCP/MoH
- NMCP/MoH

Day 2

- Recap Day 1
- Working sessions (group work to elaborate actions on response element I, II, III and IV)
- Debrief in plenary
- Advocacy meeting with political partners (TBD, small group)

- NMCP/MoH
- WHO/RBM/NMCP
- WHO/RBM/NMCP
- NMCP/MoH

Day 3

- Recap Day 2
- Field visit (TBD)
- Working sessions (group work to elaborate actions on response element I, II, III and IV)
- Debrief in plenary

- NMCP/MoH
- NMCP/MoH
- WHO/RBM/NMCP
- WHO/RBM/NMCP

Day 4

- Recap country meeting and results
- Next steps

- NMCP/MoH
- WHO/RBM/NMCP

Example participant list: ideally a broad group of stakeholders and partners at national, subnational, regional and global level featured

Pre-meeting Meeting Follow-up

ILLUSTRATIVE - NOT EXHAUSTIVE

Example list of participating entities

Internal Stakeholders



National & subnational level

- NMCP/MoHCDGEC/Ministry of Health and Social Welfare
- ZAMEP
- MoF/Ministry of Education/ Ministry of Agriculture
- National legislative branch (e.g., MPs)
- Surveillance/Statistical Office
- President's Office – Regional Administration and Local Government
- Selected regional and district government
- Selected regional and district health officers
- Academic institutions and experts (e.g. National Institute for Medical Research)
- Professional associations
- Civil society
- Private sector

Partners

Country level

- WHO (CO)
- PMI/USAID
- PSI
- DFID
- BMGF
- Global Fund
- UNICEF
- UNDP
- CHAI
- Malaria Consortium
- World Bank



Partners

Regional & global level

- WHO (AFRO, HQ)
- RBM partnership
- ALMA
- PMI/USAID
- Dept. of Defense Walter Reed Army Institute of Research
- BMGF
- Global Fund
- African Development Bank
- Japan International Cooperation Agency
- Danish International Development Agency (Danida)
- Swiss Agency for Development and Cooperation
- Chinese Development Agency/Government of China

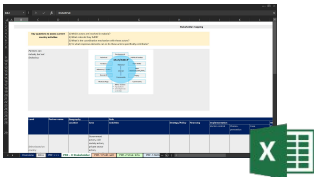
To be adapted and completed based on pre-meeting stakeholder mapping

Material provided can help guide situation analysis pre-meeting and support elaboration of next steps and facilitation during the meeting

Pre-meeting Meeting Follow-up

Pre-meeting work material

Stakeholder mapping
(included in self-assessment template)



Self-assessment template covering each response element

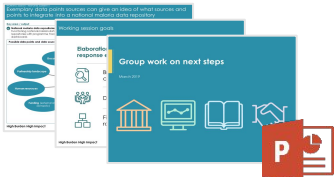


HBHI introductory presentation

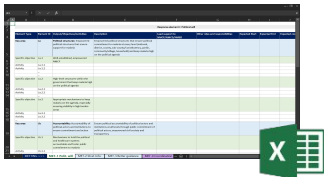


Meeting facilitation material

Introduction to working sessions on each response element



Next steps log frame template for each response element



Key questions the material aims to help answer

- 1) What **actors** are **involved** in malaria?
 - 2) What **roles** do they fulfil?
 - 3) What is the **coordination mechanism** with these actors?
 - 4) To **what response elements** can or do these actors specifically contribute?
- 1) What is **currently being done**? (Current activities)
 - 2) What **works well**?
 - 3) What **needs improvement**? (Actions to be taken)
 - 4) What is **missing and needs to be put in place**? (Actions to be taken)
- 1) What is the **rationale for HBHI**?
 - 2) What are the **objectives of HBHI**?
 - 3) What is **new about HBHI**?
 - 4) **How does HBHI work** at local, regional and global level?¹
- 1) What are the **key areas and example activities** under each response element?
 - 2) What are the **main challenges and bottlenecks** for the country under the response element?
 - 3) What are the **key questions** to be answered during the **working session**?
- 1) **What can be done to address gaps** affecting achievement of country goals under the response element (tangible activities)?
 - 2) **Who** will **lead** these next steps? **Who** will **support** these next steps?
 - 3) **From when to when** will the next steps be undertaken?

The material will be shared in a separate e-mail and can be adapted to the specific country context



Assigning a focal point for each response element at the NMCP/MoH can support effective meeting pre-work and meeting working sessions

Pre-meeting

Meeting

Follow-up

Assigning a **focal point for each response element** at the NMCP/MoH can be helpful

- They can serve as **central contact for gathering pre-meeting information**
- They can improve **facilitation of the working sessions** during the meeting to ensure **focused discussions** on next steps based on **thorough understanding of current progress** and potential bottlenecks
- They can **lead follow-up** on next steps



Focal contact persons can **work in tandem with a partner from the global level** to ensure good cooperation and ongoing exchange

Together the response elements, feed into the overarching implementation process to drive outcomes and impact...

