

Community Based Child Health Service Delivery in the context of COVID-19

Somalia Experience



Content

Save the Children's community based child health programming in Somalia

Somalia Health System and Community Interactions

Contextualizing for COVID-19

Challenges

Save the Children's community based child health programs

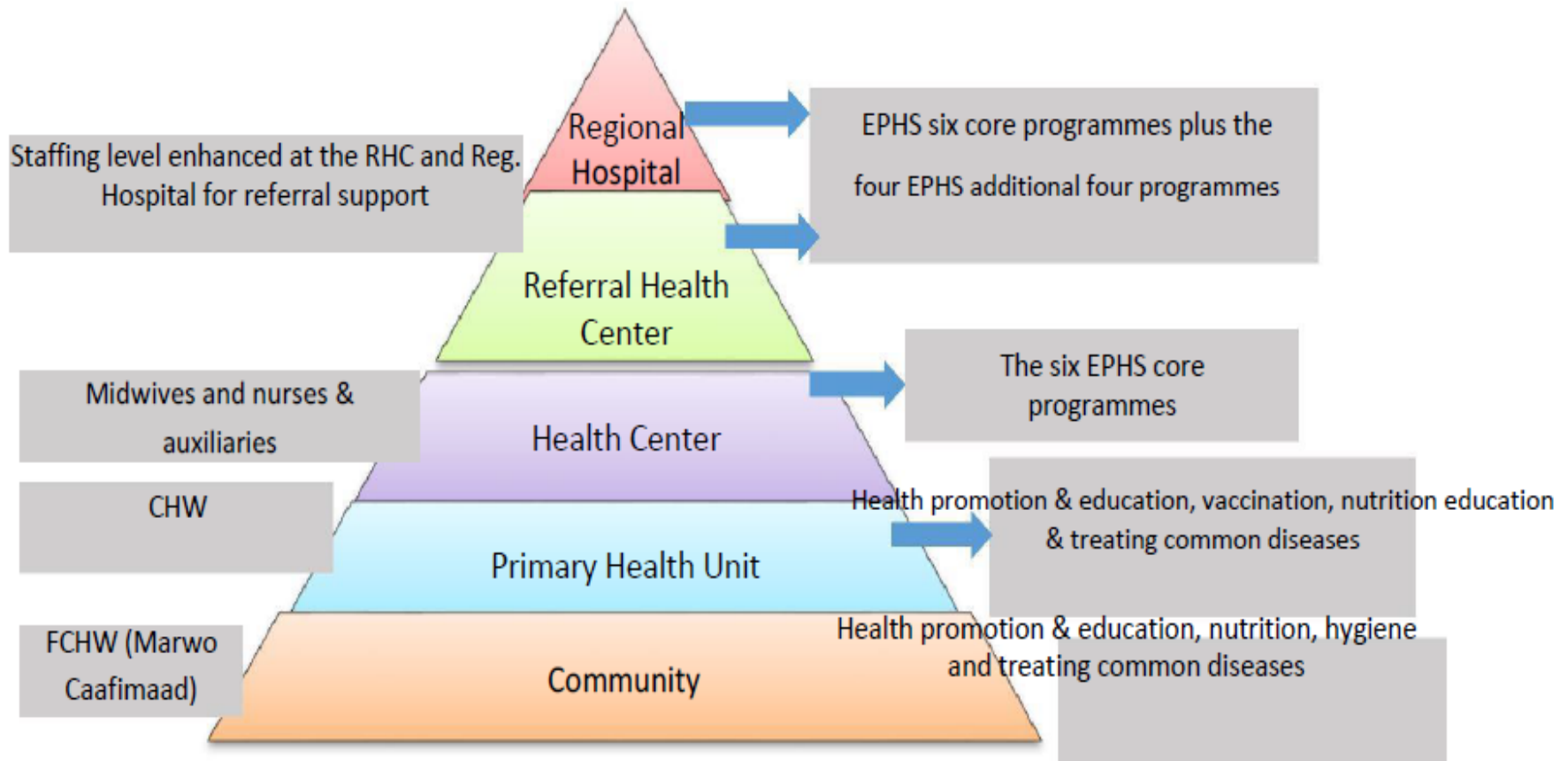
- SC supports FHWs through the ICCM program, delivering high-impact treatment interventions in the community for children <5 years
- The iCCM Program is implemented by a network of Female Health Workers (FHWs) selected by the community
- Following training, deployed to their respective communities to serve as households' first point to seek health service
- FHWs responsible for promoting desired health behaviour and practices

Save the Children's community based child health programs (contd)

- 10-15 FHWs linked to a FHW Supervisor for monthly mentoring and supervision
- SC supports over 200 FHWs and 25 supervisors to reach 200 hard-to-reach communities
- Covers a population of about 500,000 beneficiaries
- Gender-balanced CHC directly overseeing day-to-day functions of the FHW
- CHC provides feedback to the team during visits or through toll-free lines
- FHW provides services in her resident community, thereby increasing acceptance



Somalia Health System and Community Interactions



Contextualizing for COVID-19

- Supported the MOH to develop an Operational Guideline for FHWs on COVID-19
- Trained FHWs and their supervisors on COVID-19 adaptations
- Created Whatsapp Group chats for Supervisors and their FHWs to facilitate remote mentoring, reporting and information sharing
- Currently working with Phillips Group to design a digital platform for more efficient and longer-term remote programming
- Each FHW receives supplies from the Linked Health Facility with physical/social distancing measures in place

Challenges and how to address

- Referral challenges: Linked Health facilities notified via Whatsapp chats to make prepare to receive client
- Data Inconsistencies: Supervisors provide mentoring during monthly reporting period
- In the context of COVID-19, other challenges include:
 - Maintaining IPC during home visit: Training and supplies provided
 - Increased risk of FHW getting infected with COVID-19: Provision of adequate PPEs for supported FHWs to limit human-to-human transmission

THANK YOU



Save the Children